

1966

jan.-feb.

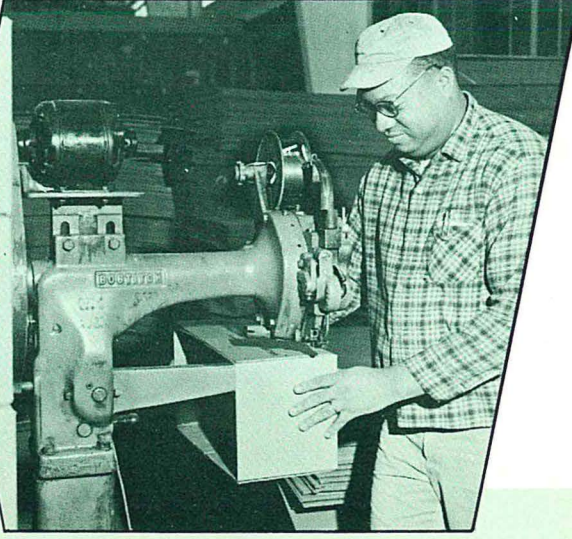
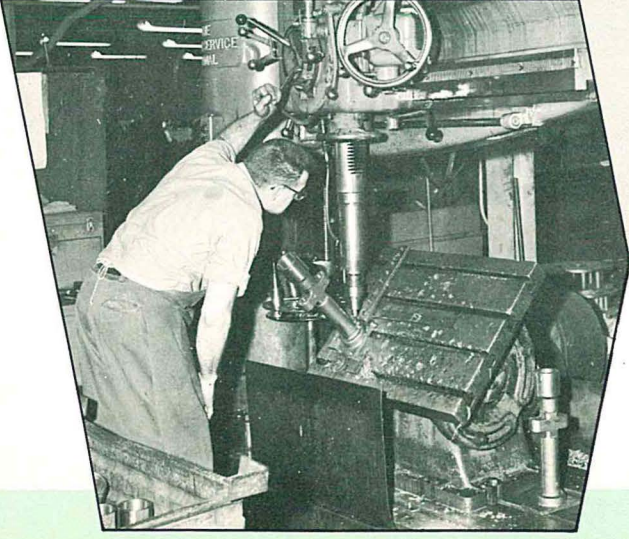
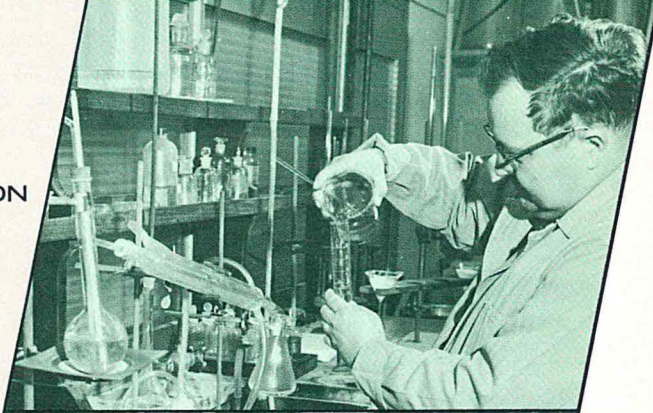
vol. 25, no. 1

WHEELABRATOR

# PARADE

## PROFIT SHARERS AT WORK

STORY ON  
PAGES  
10-11







## *The aid we give to education*

It was gratifying to note in the December issue of PARADE that a local leader classified Wheelabrator Corporation as a "firm with a heart."

One reason for this sentiment being held in the community is the aid Wheelabrator Corporation gives to education.

### *Specifically,*

1. We have awarded each year since 1954 the Verne E. Minich "Founder" Scholarship at Purdue University and the Otto A. Pfaff Scholarship at the University of Notre Dame to talented high school graduates. Sons and daughters of employees are given priority for these awards.
2. A \$100,000 grant has been given to the Foundry Educational Foundation. It endows 50 fellowships for graduate study in the cast metals industry.
3. Many have participated in our tuition reimbursement program for employees attending night schools at local institutions. Participants are given a pro-rated

reimbursement according to the grades obtained in class work.

4. Wheelabrator has for the past ten years given summer employment to college-bound youths, primarily sons and daughters of employees. Last summer's program, which won national acclaim, was the largest ever undertaken by the Company.

We have always had a strong interest in education. It is gratifying to know that men and women who today pursue careers in science, industry, business and education were given some means of financial support by our firm.

Wheelabrator has a natural interest in seeing that trained and capable persons are forthcoming from our schools. The growth of any company is closely aligned to the excellence of the training of the graduates of our colleges and universities. Such educational aid, too, is in the best tradition of corporate citizenship.

Furthering and supporting education is, we believe, a keystone to industrial progress.

*James F. Connaughton*  
President

VITAL VALUES  
**W**  
FOR INDUSTRY

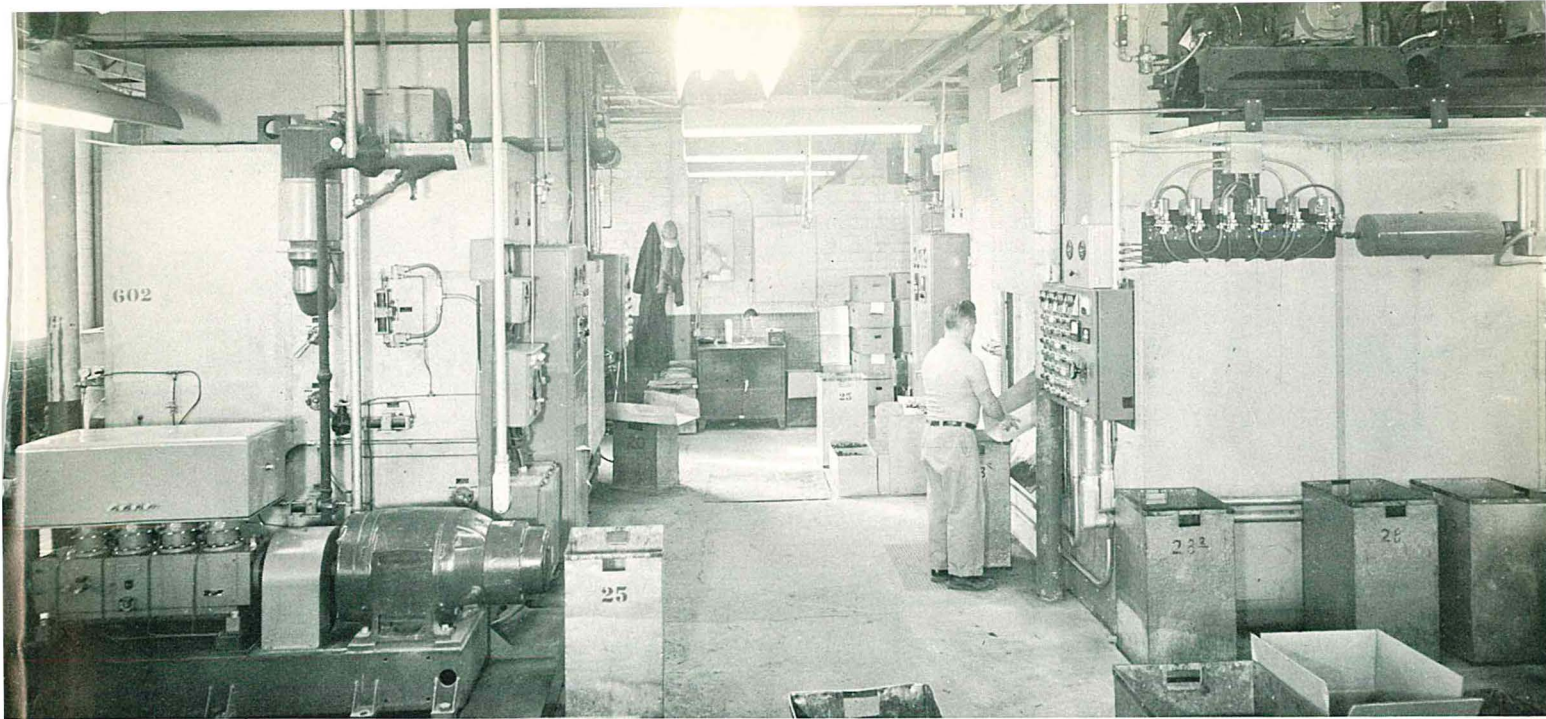
WHEELABRATOR  
**PARADE**  
Vol. 25, No. 1      January-February, 1966  
Editor — Merle D. Gisel  
Published for  
Employees of The Wheelabrator Corporation  
Mishawaka, Indiana

### ON OUR COVER

Credit for the success of Profit Sharing at Wheelabrator goes to the men and women who work in our plants and offices. The cover photos symbolize the efforts constantly being made by Wheelabrator employees to increase sales and production . . . efforts that made 1965 the best year ever for Wheelabrator and culminated with the largest contribution ever made by the company to the Employees' Savings and Profit Sharing Trust Plan.







The two Frigibrators at Western Rubber Company are positioned so that one man can operate, load and unload both machines.

## Performance, Savings Make Frigibrator Popular

### Two Frigibrators Create Savings for Western Rubber Company

Savings in the impact deflashing of rubber parts with a Frigibrator have made the Western Rubber Company of Goshen, Indiana another satisfied Wheelabrator customer.

So satisfied, in fact, were firm officials with the machine they purchased late in 1964 that they repeated the order and a second Frigibrator was installed in their plant in September of 1965.

The two Frigibrators are an important cog in the production operations of the firm, which produces a variety of custom-molded and lathe-cut rubber products including insulators, couplings, seals, gaskets, stoppers, caps, bumpers, levelers and grommets.

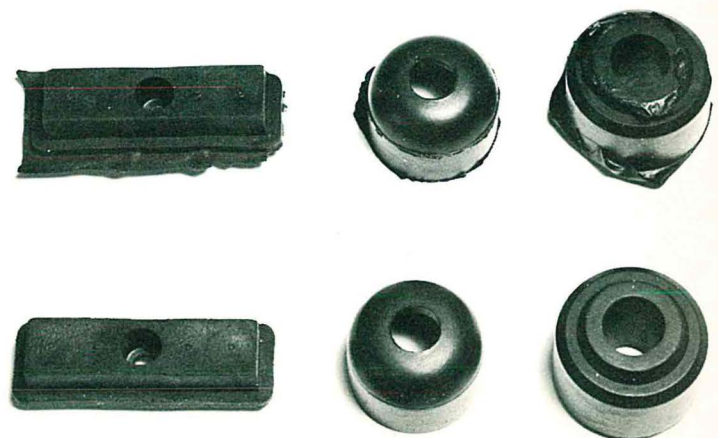
Developed by Wheelabrator engineers in 1964, the Frigibrator combines a rubber deflasher with a cryogenic unit capable of establishing deflashing chamber temperatures down to 100-degrees-below-zero. The extreme cold freezes the thin flash that is left on the parts after they are molded, but it does not embrittle the parts themselves.

Tiny steel pellets are then hurled at controlled velocity upon the parts which turn slowly inside the deflashing chamber on an endless belt con-

veyor. The blast of the steel shot uniformly trims the frozen flash, without affecting the finish of the rubber parts.

Officials at Western Rubber Company are happy with the savings effected, because they have eliminated the costly temperature-reducing gases previously used in their mechanical impact deflashing equipment . . . and they are pleased with the outstanding performance records the Frigibrators have established.

Examples of the broad range of rubber parts deflashed by the Western Rubber Company in their two Frigibrators are shown before and after deflashing. Even fragile precision parts and those with metal inserts can be quickly, safely deflashed in the machines.





# FIVE BALCRANK PRODUCT LINES INTEGRATED INTO

Five new product lines have been added to Wheelabrator's Mishawaka operations with the assimilation of our Balcrank Division which had been operating in Cincinnati, Ohio.

These lines include manual machine tool accessories, industrial pumps — including a new type of coolant pump, the Brookins line of service station hardware and various types of lubrication equipment used principally by service stations.

## Machine Handle Division

Machine handles (Ball Cranks) used by the machine tool industry were the first products manufactured by Balcrank. The Machine Handle Division is still the leader in its field, producing precision manual controls for the machine tool industry and other equipment. Items in this line include plastic knobs and handles, clamping levers, forged cranks, chrome plated steel control balls, compound rests and balanced cranks.

The Machine Handle Division is currently test-marketing several new products for possible introduction at trade shows this year. The Division is also broadening the base of its operations by manufacturing controls for not only the machine tool industry, but for other industries using manual controls.

## Lubrication Division

The firm's Lubrication Division has remained closely aligned over the years with the servicing segment of the automotive and trucking industry

through the sales of its product lines to major oil companies, auto and truck dealerships and parts and accessories distributors.

Heavy duty lubrication equipment, some of which is sold to major oil companies for use under their trade names, leads this division in sales volume. This diversified equipment is used in dispensing oil and grease and in the routine maintenance of cars and trucks as well as for applying undercoating and washing cars.

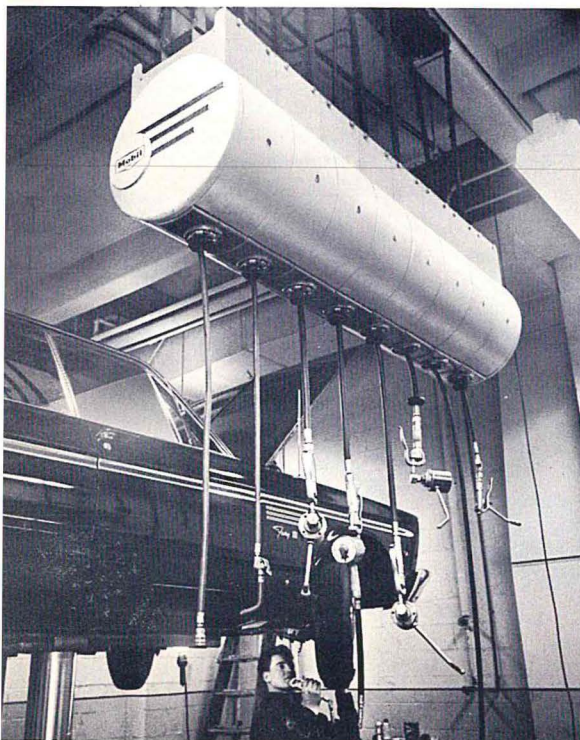
Among new products tailored specifically for new auto maintenance procedures is the Balcrank Oil Bar, a cabinet with integral spigots and meters discharging multiple grades of motor oil separately or simultaneously. Various other types of liquid products such as gasoline, kerosene and solvents, in addition to oil, can be dispensed by these bars.

## Industrial Division

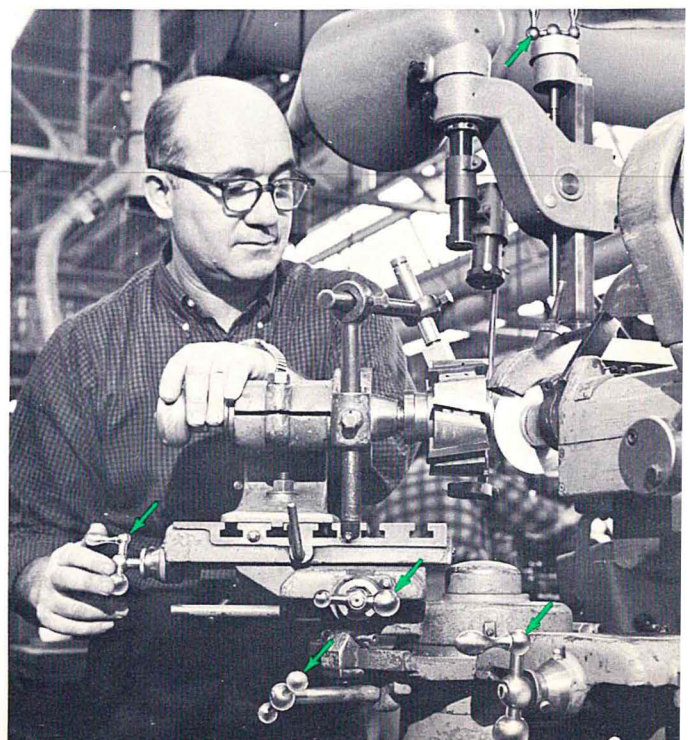
Balcrank's Industrial Division manufactures a complete line of transfer, paint and chemical pumps in all types of materials from brass to stainless steel . . . a line so complete that these pumps can handle almost any material on the market. The Division also manufactures airless spray equipment and airless electrostatic equipment.

## Jet Pulser Pump Division

A separate division has been set up to manufacture and market the Jet Pulser Pump which is a relatively new product. This was done largely be-



A Balcrank multiple lubrication unit for Mobil is the only unit of its type in Chrysler Corporation's new service automotive center in New York City. It pumps three types of oil, three types of grease, transmission fluid and water for the servicing of cars.



This Monarch Machine Tool Company lathe incorporates five (arrows) Balcrank compound rests, balanced cranks, levers and counter-balanced hand wheels.



# MISHAWAKA FACILITIES

cause of the excitement created by the pump's introduction at the Production Engineering Show in Chicago last summer. In fact, this exhibit was so successful and the pump so phenomenal that Balcrank executives will give a technical paper and a demonstration at the 1966 Tool Show in Detroit.

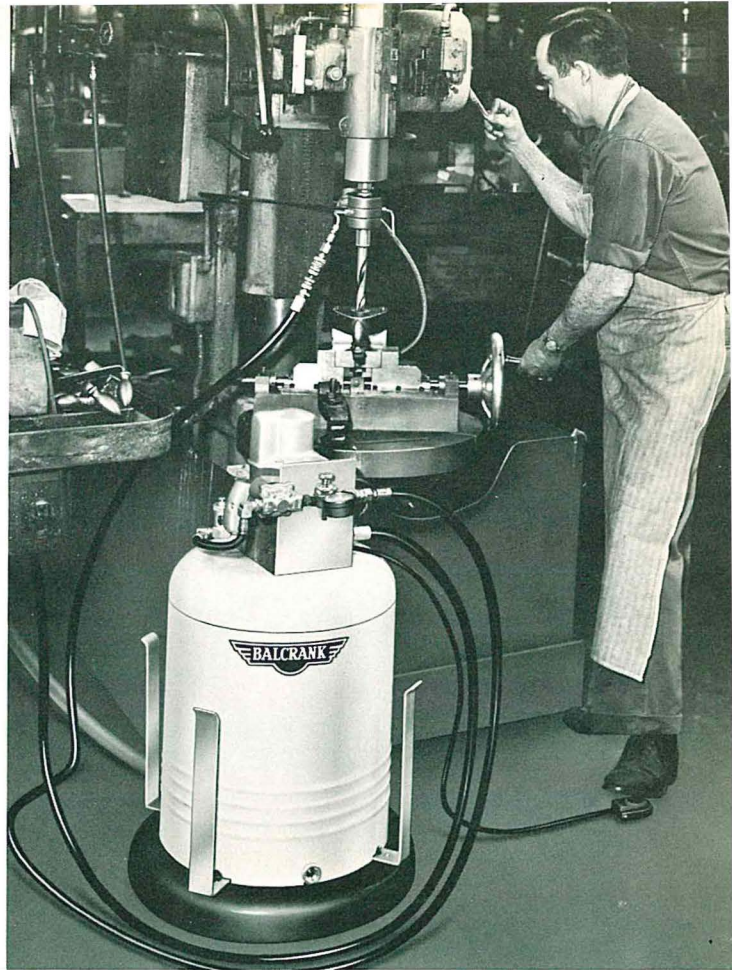
This new product has applications in any industry where metal drilling is needed. Basically the product pumps fluids through an inducer into an oil hole drill, getting the coolant to the point of friction to eliminate heat during the drilling.

## Brookins Division

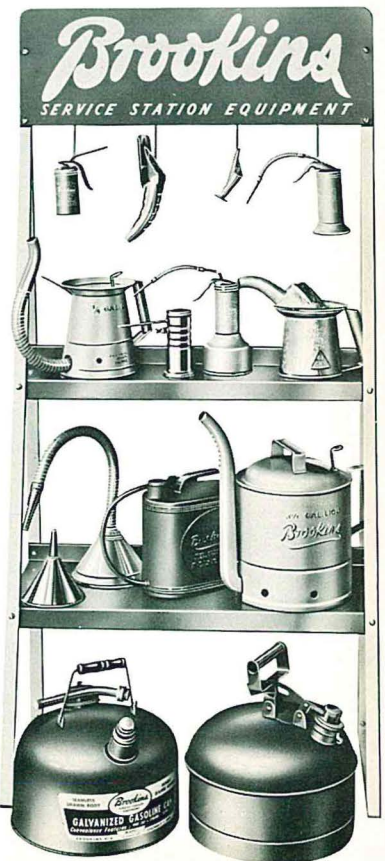
Balcrank's Brookins line is well established in the manufacture of quality service station hardware. In fact, it is the oldest company — and has the most complete line of equipment — in the entire market. Included in this line are oil measures, radiator fillers, mechanic's creepers, battery fillers, gasoline cans, etc.



The spraying of undercoating is an added application of the air-motor type pump manufactured by Balcrank for the handling of greases and oils.



An operator demonstrates the new Jet Pulser Pump manufactured by Balcrank. This revolutionary type of coolant pump cuts the time and cost of deep hole drilling by machine tools.



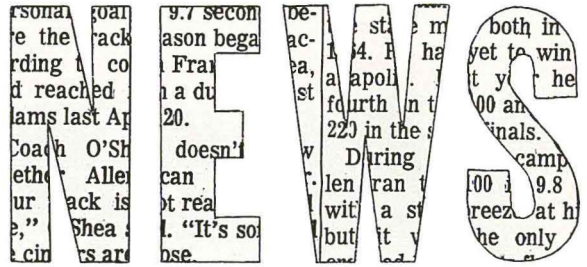
A wide variety of service station hardware, such as shown in this display, is marketed under the Brookins name by Balcrank.





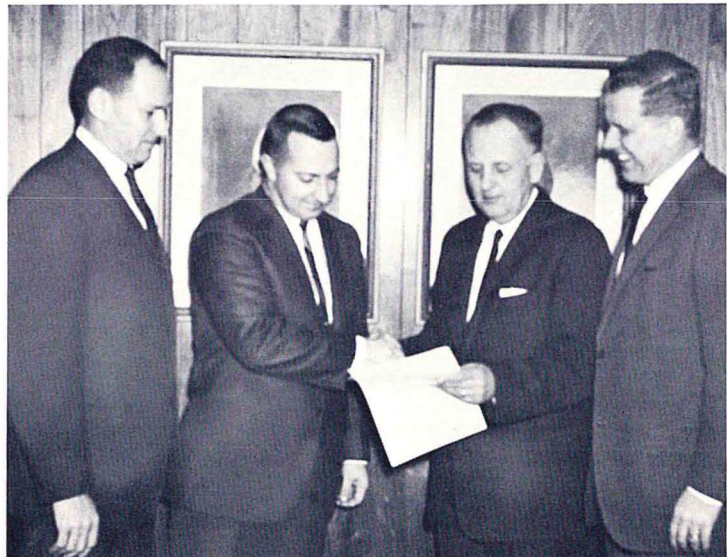
Wheelabrator's exhibit at the 1965 Chemical Show, held November 29 to December 3 in New York City, demonstrated how dust and fume control can be custom-engineered to ventilate varying chemical processing applications and problems.

K. E. Blessing, left, Vice President of Sales and Lawrence W. Kohlmeyer, right, Field Sales Manager, reminisce with George Lieser during the dinner honoring the latter's retirement in December.



AN

Vice President of Sales Kenneth E. Blessing, second from right, congratulates Dean Keener, Sales Engineer in the Philadelphia region who won the Lorco Division's "Make It Happen" sales contest which ended November 1. Keener sold enough Lorco equipment during the 8-month contest to earn an all-expense-paid trip to Puerto Rico. Also in the picture are Gordon E. Medlock, left, Lorco Sales Manager and Lawrence W. Kohlmeyer, right, Field Sales Manager.





Balcrank Division officials held a training school in Mishawaka in January for the salesmen responsible for marketing the new Jet Pulser Pump. The group took a break from one of their sessions to pose for the picture.



Four model furnaces, each equipped with one of the major types of furnace pick-up hooding methods, were the focal point of our exhibit at the 1965 AIME Show held in Pittsburgh from November 29 to December 3.



F. John Pichard, right, Vice President of Marketing, points out salient features of a Dust Collector model to one of the editors of business and general publications who attended the Air Pollution Press Conference sponsored by Wheelabrator Corporation, December 7 in New York City.



New Julianna Club officers pose on a stairway at Randall's Inn after their election at the club's annual Christmas Party. From left to right, are Mrs. Wayne Clements, vice president; Johanna Wiendels, treasurer; Joan Kirkwood, board member; Mrs. Larry Dawson, president; Joan Schue, board member; Mrs. Rex LaDow, secretary and Julia Ciszczon, board member.



# TWO APPOINTED TO MARKETING POSITIONS

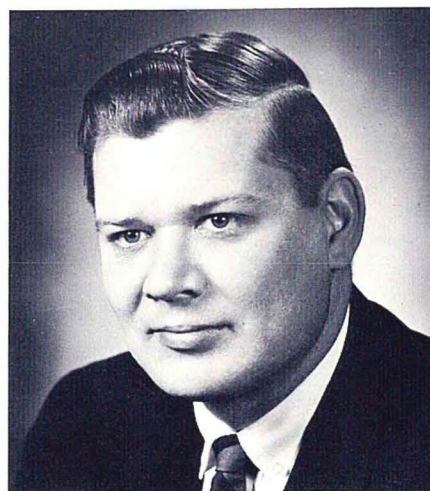
Arthur W. Mallory has joined Wheelabrator Corporation as Sales Product Manager for Electric Arc Descaling and Joseph J. Janush has rejoined our firm as Marketing Manager. Both men report directly to F. John Pichard, Vice President of Marketing.

Mallory has been engaged in systems engineering work for the Aircraft Division of Douglas Aircraft Company, Long Beach, California. Previously, he had worked for many years in various marketing and engineering positions at Bendix Products Aerospace Division in South Bend. At Bendix, he had responsibility for the total market development of nuclear reactor control equipment.

Janush most recently was Manager, Sales Development for Huyck Corporation, Albany, New York. Prior to that he had held various positions in field sales, marketing and product development with Wheelabrator Corporation.



ARTHUR W. MALLORY



JOSEPH J. JANUSH

## **W**e knew him when



**BILL FORE**

**Bill Fore** is now Shipping Department Foreman. When he started his Wheelabrator career in 1940, it was as a spray painter in the Shipping Department. Following a four-year term of service in the Army, Fore returned to Wheelabrator in 1946 as a carpenter. In 1948, he was transferred to the Machine Shop as an Assembler. He was transferred back to the Shipping Department as Foreman in 1950. In this position, Fore is responsible for the supervision of the shipment of all equipment built in our shop.

Fore lives with his family at 1225 Pyle Avenue, South Bend. For recreation, he bowls on the Shipping Team in the Tuesday Night League sponsored by the Athletic Association.

**Myron W. Yoder**, Assistant Director of Purchases, joined Wheelabrator in 1941 as assistant purchasing agent. He was named purchasing agent in 1944 and remained in that position until 1963 when he was named to his present position.

A member of the National Association of Purchasing Agents and the Purchasing Agents Association of South Bend, Inc., he served during the past year as chairman of the local association's public relations committee.

Yoder is a member of the Board of Managers of the Mishawaka YMCA. He also serves on the "Y's" Youth Advisory Committee and is tally keeper for the Akawahsim Nation of Indian Guides. He is also a member of the First Methodist Church, Masonic Lodge 130 and the Scottish Rite, Valley of South Bend.



**MYRON W. YODER**



**FOUR EMPLOYEES  
SHARE A JOB —  
AFTER HOURS — AS ...**

## **... Jr. Achievement Advisors**

Four employees who work in different departments are sharing a job after working hours as advisors to a Junior Achievement company sponsored by Wheelabrator Corporation.

Junior Achievement is a national, non-profit program designed to educate high school students in good business practice.

Sharing their professional knowledge with a group of 18 students in a company called Wheeler-Dealers, are Robert Montague, Accounting; George VanBrouaene, Parts Service; John Keller, Steel Shop and Tom Strantz, Engineering.

Since school started in September, the students have met once a week with their advisors at the Junior Achievement Center, 947 Louise Street in South Bend.

The junior organization operates on the same free-enterprise principles as the corporation which sponsors it. The students have formed a company, organized their operations into departments, elected officers, sold shares of stock and selected a product. Later in the year they'll market the product, issue detailed reports to stockholders, pay wages to themselves, distribute the profits and close the business.

The advisors believe that the time spent on the project is worthwhile because they are helping the students gain practical pre-business knowledge and experience that may be of benefit to them later in life.

George Van Brouaene, standing, observes officers of the Wheeler-Dealers as they keep Company records during a regular business meeting at JA headquarters.



John Keller, second from left, shows a Junior Achiever how to add the final touch to one of the hot dish trivets the Company is manufacturing while Tom Strantz, third from right, oversees the efforts of two of the members of the Company.



Robert Montague reviews accounting procedures for members of the Junior Achievement Company our firm sponsors when the group toured Wheelabrator's offices and plants recently.







President James F. Connaughton discusses the record contribution made by the Company to the Wheelabrator Employees' Savings and Profit Sharing Plan with Glenn T. Fulmer, president of Local 995 UAW-AFL-CIO.

There's a story that goes like this: A sailor on board ship was awakened in the middle of the night by a shipmate who shouted, "Hurry up, the ship's sinking." To this the sailor replied, "Who cares? It's not my ship!"

True, the sailor didn't own the ship, but he and the other crewmen were responsible for its welfare.

This story has a moral for profit sharers. Since everyone is involved in the well-being of our company, everyone is responsible for its profits. As you know, the company's prosperity is directly reflected in each employee's profit sharing account.

The record contribution made at the end of 1965 by the company to the Wheelabrator Employees' Savings and Profit Sharing Plan is proof of our firm's dynamic organization and that employees at all levels are willing to accept responsibility for the profits of the company.

Not only was 1965 a record year for profit sharing — it was also a banner business year.

# \$513,070

## Profit Sharing Organization

### To mention a few firsts:

We made outstanding sales gains in all divisions . . . We embarked upon a program of substantial expansion of our production facilities . . . We moved the entire operations of the Balcrank Division from Cincinnati, Ohio to Mishawaka . . . Our position in the world market was strengthened . . . We introduced new products and penetrated new markets, thus broadening our marketing bases.

And it appears that 1966 will be even better. We enter the new year with a record backlog, improved and expanded production facilities and forecasts by reliable economic research groups for a continued increase during the year in capital goods purchased and plant expansions.

### Specifically, our best year yet saw:

- Overall blast sales increase more than 20 per cent above the record level attained in 1964.
- New sales records made in blast cleaning equipment for the descaling of various steel products, shot peening equipment and wide acceptance gained for highly automated production blast cleaning equipment for a number of casting cleaning applications.
- New manufacturing and processing operations instituted in the manufacture of Steel Abrasives.
- A 25 per cent increase in sales in our Lorco Division.
- Record sales of air pollution control equipment with procurement of orders for some of the largest con-



# 19 Company Contribution to g Plan Compliments Dynamic and Responsible Employees

trol systems ever produced. Continued high activity was experienced in such key areas as the abatement and recovery of valuable dust in the cement industry and the solution of difficult control problems in the mining and metallurgical field.

- The signing of a license with the West German firm of Lurgi Apparatebau Gesellschaft to sell and manufacture Wheelabrator-Lurgi Electrostatic Precipitators. Initial sales of this equipment by Wheelabrator have been in the metallurgical field for the control of fumes from smelting operations.
- A further strengthening and expansion of our position in world markets. All of the joint ventures with international affiliates for the manufacture and sale

of Wheelabrator equipment reported sales gains and profitable operations.

- Balcrank Division operations being moved from Cincinnati to Mishawaka. During the last quarter of the year, Balcrank delivered its first orders for a revolutionary new type of coolant pump which cuts the time and cost of deep hole drilling by machine tools.

So, it does stand to reason, diligent work and thorough planning helped boost Wheelabrator productivity to its record high level. And we all are beneficiaries, through the largest contribution ever made by the company to the Wheelabrator Employees' Savings and Profit Sharing Plan.

YEAR	Company Contribution	Savings	Earnings	Expenses & Adjustments of Investments to Quoted Market	Paid to Participants	Year-End Balance
1965	\$ 513,070	\$ 365,283	\$ 296,634	(\$405,766)	\$ 394,745	\$9,178,375
1964	429,410	319,859	264,592	(420,357)	443,844	7,992,367
1963	292,973	283,798	228,621	(423,505)	326,291	7,001,993
1962	323,139	268,862	206,812	428,394	282,780	6,099,387
1961	164,941	240,992	186,315	(526,135)	203,777	6,011,748
1960	264,422	228,185	169,929	(131,332)	249,357	5,097,142
1959	309,560	225,478	150,630	40,012	404,649	4,552,631
1958	120,401	205,982	141,179	(182,381)	318,921	4,311,624
1957	294,810	218,441	119,518	8,847	176,497	3,980,602
1956	384,041	197,178	94,294	174,088	125,428	3,533,177
1955	373,279	172,883	79,707	42,504	112,497	3,157,180
1954 (14 Mos.)	262,681	178,802	70,010	(36,276)	76,497	2,686,312
1953	326,852	144,639	46,574	10,506	105,698	2,215,040
1952	363,923	141,618	34,535	1,388	43,166	1,813,179
1951 (10 Mos.)	302,025	91,892	18,890	21,364	23,847	1,317,657
1950	222,615	80,295	15,805	12,876	42,066	950,061
1949	111,541	80,289	9,882	1,759	77,300	686,288
1948	238,049	93,382	2,608	3,590	11,265	563,635
1947	228,256	16,195	—	—	—	244,451
<b>Totals 12/31/65</b>	<b>\$5,525,988</b>	<b>\$3,554,053</b>	<b>\$2,136,535</b>	<b>(\$1,380,424)</b>	<b>\$3,418,625</b>	<b>\$9,178,375</b>

1965 Gross Earnings on Beginning Balance — 3.71%.

NOTE: The bracketed figures denote credits.



# Fourth Manufacturing Facility Added – Expansion Program



Manual machine tool controls being readied for shipment in the new addition to our plant.

Wheelabrator expanded its manufacturing operations into a fourth plant in Mishawaka during December.

Known as Wheelabrator Corporation Plant No. 4, the new facility on McKinley Highway was formerly occupied by the Triangle Tool and Die Company. It contains a total of 30,000 square feet of space of which 25,000 square feet is used for manufacturing.

At present, all manufacturing and assembly of our Lorco Precision Finishing equipment is confined to the new plant as well as some small, light sub-assembly operations for Wheelabrator equipment.

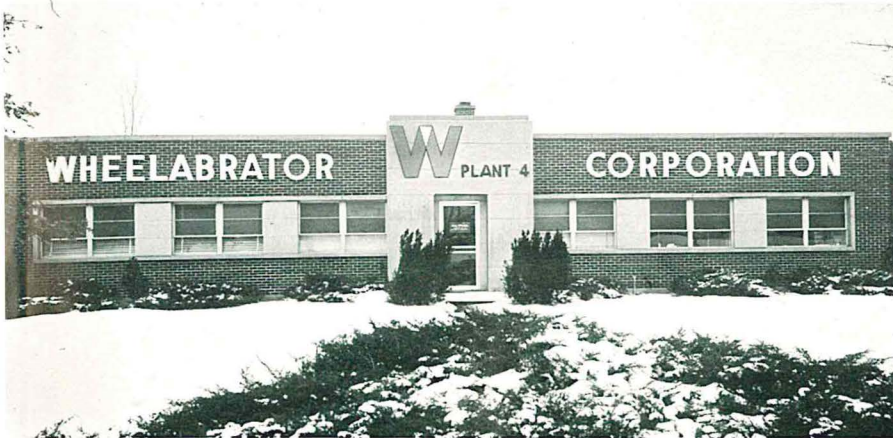
The office space at the new location is being utilized by Balcrank Division sales personnel.

An inside view of the Plant No. 4 manufacturing facilities. Shown are Lorco Vibratory Finishing Machines in various stages of production.





# Nears Completion



Wheelabrator Corporation Plant No. 4 — as seen from McKinley Highway.

The move of the Balcrank Division from Cincinnati has been completed and production of the various Balcrank lines has reached nearly 100 per cent of the total that was being produced in Cincinnati before the move began.



Full scale production on the Balcrank Brookins line.

## Meet the Field



D. H. TAYLOR



W. E. SCHERRER

### D. H. TAYLOR

Don Taylor is a Regional Engineer for the Dust and Fume Control Division in the Detroit and Cleveland Regions.

A 1952 graduate of Ohio State University, he holds a degree in mechanical engineering. Before joining Wheelabrator, he worked as a mechanical engineer in the Plant Layout Section of the Ford Motor Company's Cleveland Foundry specializing in foundry and plant ventilation.

Don, a member of the American Foundrymen's Society, lives with his family in Columbia Station, Ohio.

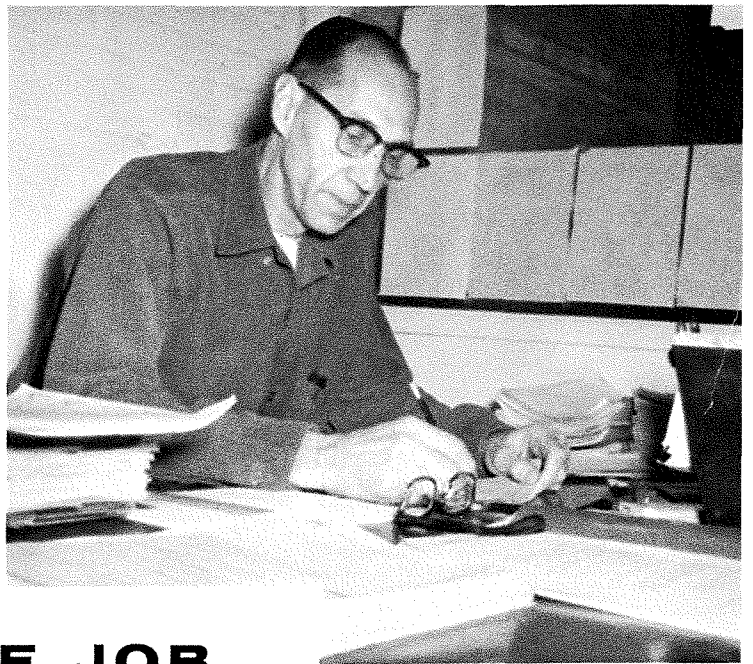
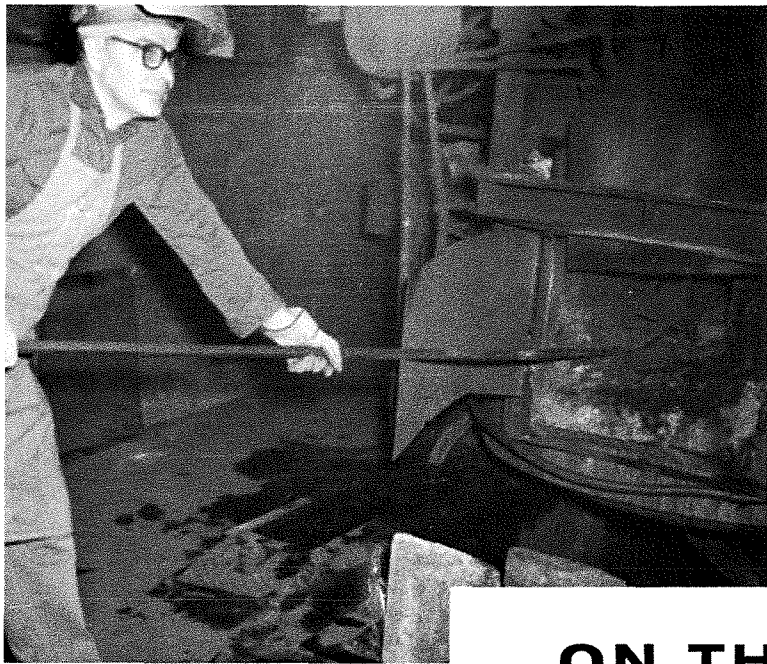
### W. E. SCHERRER

W. E. Scherrer, a Field Engineer in the Birmingham Region, joined Wheelabrator's sales force in 1957.

He was formerly president of the S & H Foundry in Mishawaka for 11 years and had worked for the Aluminum Company of America. A graduate of Purdue University with a degree in metallurgical engineering, Scherrer is a member of the American Foundrymen's Society.

Married to the former Doris Stevens, the Scherrer's have two sons, Jim and Bob. The family participates in golfing as a group and usually enjoy vacations in this way. They reside in Anniston, Alabama.





## ON THE JOB

**Clarence E. Knisley** (top left) is an electric furnace operator in the Foundry. He has held this job since 1946 when he started working at Wheelabrator. Knisley lives at 125 East Colfax in Mishawaka with his wife and three children. For recreation he likes to hunt, fish and bowl.

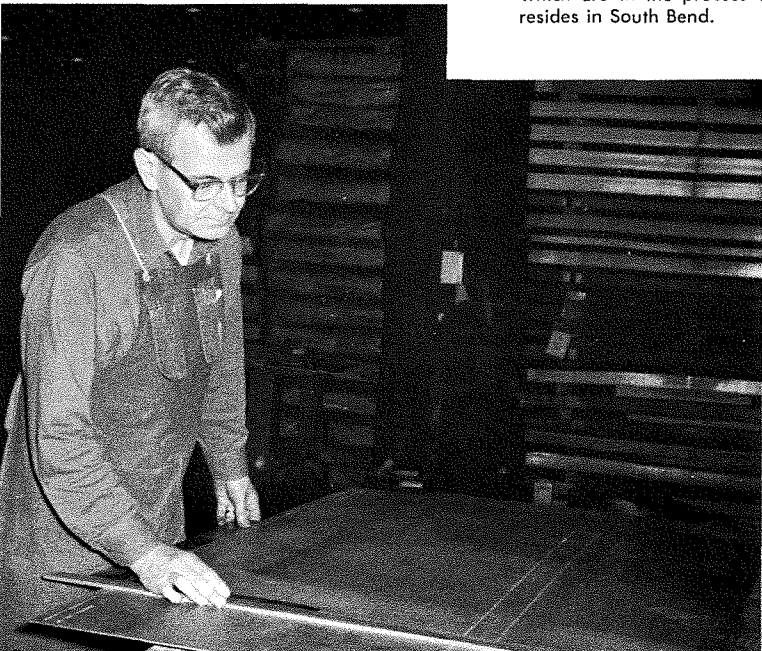
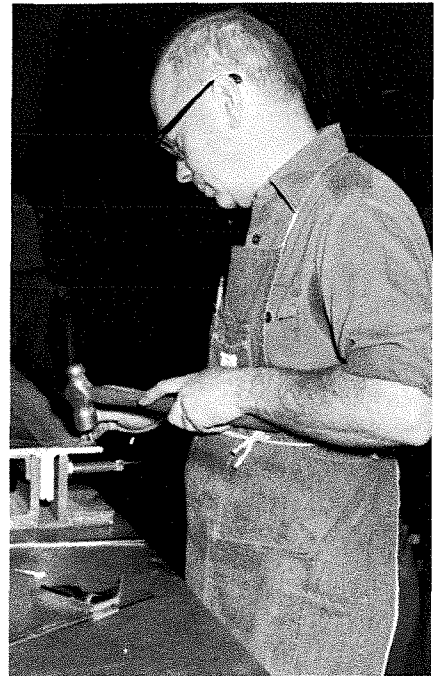
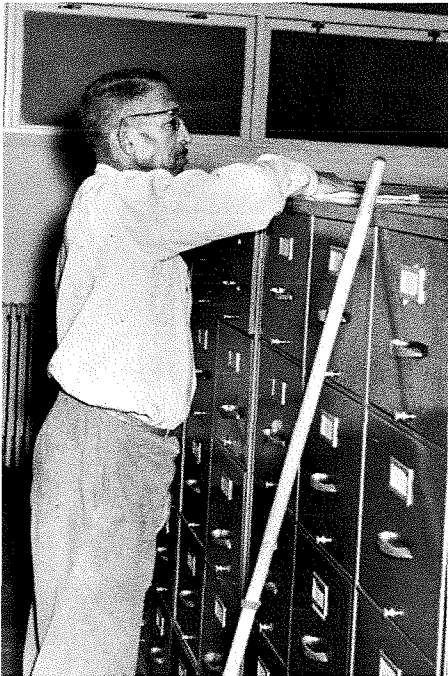
**Cecil Jack** (top right) is a checker in the Shipping Department, where he has been employed since 1943. He and his wife, who live at 218 Alfred in Mishawaka, have two sons. Cecil bowls on the Shipping Department team in the Tuesday Night League sponsored by the Athletic Association.

**Joseph Hayes** (left) has worked at Wheelabrator for eight years on the office janitorial staff. He works nights, cleaning the Engineering and Files areas of the office section. He lives in Cassopolis, Michigan.

Since 1940, **Glen L. Martin** (right) has worked in the fabrication section of the Steel Shop. He started as a sweeper, advancing to make-up and then to semi-layout. He lives on East Jefferson Road with his wife and four daughters. One daughter, Sandra, works in Methods & Planning.

Amateur photography is an outside interest of **Fred J. Ruff** (bottom left), Skill B. Layout, Steel Shop. Since 1940, when Fred joined Wheelabrator, he has also worked in the sheet metal area and in semi-layout.

**Phil Johnson** (bottom right) is a draftsman in the special applications section of Engineering. He has worked at Wheelabrator since 1939. Antique cars are his hobby. At present, Phil owns two old cars — both of which are in the process of being restored by him. He resides in South Bend.







John Phillips points to the slight scratch made on his safety shoe by a heavy tote bucket which struck his foot while he was working in the welding area of the Steel Shop. Looking on are Mrs. Jeanette Taylor, night nurse, and Norm Burch, Phillips' foreman.

Because a welder was wearing safety shoes . . . a crippling foot injury was recently averted in the welding section of the Steel Shop.

John Phillips was loosening a heavy tote bucket that had been resting on a metal pad. While he was doing this, the bucket slipped off the edge of the pad striking the welder's right foot.

Phillips suffered a bruising injury to his toes,

## Case for

# SAFETY SHOES



## Welder Spared Serious Foot Injury

according to Jeanette Taylor, plant nurse on second shift. But she said that the pair of shoes Phillips was wearing prevented a complete loss of all his toes. In fact, Mrs. Taylor said that the fall of the bucket, which weighs between 500 and 1,000 pounds, could have amputated the toes on the welder's right foot if he had been wearing a regular pair of shoes.

Phillips, his foreman Norm Burch and Mrs. Taylor all agree that this incident is proof of the advantages of wearing safety shoes.

## FAMILY TEAM

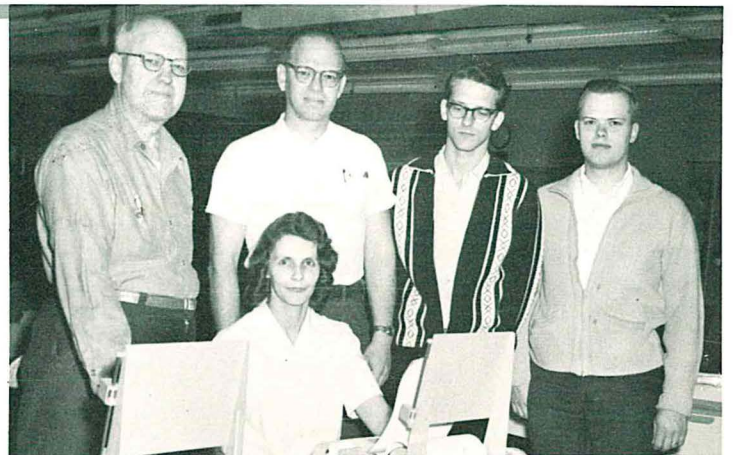
# The HILLEBRANDS

One has to look in different places to find the five Hillebrands who work at Wheelabrator . . . because each works in a different department.

This family team includes three sons and a daughter-in-law of Herbert Hillebrand who has worked in Steel Shop-Erection for the past 18½ years.

The son with the longest service record is Paul who has worked in Research & Development since 1955. He lives at 54593 Cornell Drive, Mishawaka, with his wife Barbara, who works in the mailroom and operates the TWX teletypewriter, and their

THE HILLEBRANDS — Barbara (seated), Herbert, Paul, Mike and Fred (standing left to right).



five children. Barbara began working here in 1964.

Mike began his Wheelabrator employment in 1962. He operates a large brake press in Steel Shop-Fabrication during the third shift. He lives with his wife and three children at 2422 Western Avenue in South Bend.

Fred has worked in Production

Control since 1963. He and his wife, who have one child, reside at 1101 North Johnson Street in South Bend.

The elder Hillebrand and his wife reside near the plant at 617 East Fourth Street. In addition to the three sons who work here, the Hillebrands have two other sons and two daughters.



# people AND events IN THE NEWS

## Significant Sales

Two significant sales orders have been placed with the Blast Division by U. S. Steel Corporation, Pittsburgh, Pennsylvania. The orders are for a 16-Wheel Vertical Plate Cleaning Machine and an 8-Wheel Horizontal Plate Cleaning Machine complete with Model 11 and Model 9 126-D K/D Dust Collectors. The Wheelabrators will be used for cleaning

heat-treated stainless and alloy steel plates.

Also, Wheelabrator has received its second order for an Electrostatic Precipitator. Placed by the New Jersey Zinc Co., the order is for two 11 gas passage, two field precipitators. They will be used to clean gases on a zinc roaster at the firm's plant at Depue, Illinois.

## Meetings - Seminars

**F. John Pichard**, Vice President of Marketing, attended the fall meeting of the American Institute of Steel Construction in November at BocaRaton, Florida.

Earlier he had attended the fall meeting of the Marketing Council of the Machinery and Allied Products Institute at the Homestead, Hot Springs, Virginia.

## Skene, Wieschaus at Auto Parts Show

**Julius E. Skene**, Sales Manager, Blast Division, and **L. J. Wieschaus**, Birmingham Regional Manager, represented Wheelabrator in a booth conference held in conjunction with the annual meeting of the Auto Parts Rebuilders Association, December 13 to 15, in Miami Beach. The Association this year sponsored the

booth conference set-up rather than a usual trade show with exhibits. Each participating company was assigned a booth to be used as a conference area without display material. Thus representatives of companies in the auto parts reconditioning business had an opportunity to discuss at leisure their problems with suppliers like Wheelabrator.

## Shot Peening Paper Presented

**John C. Straub**, Chief Research Engineer, presented a paper, "Shot Peening", at the 33rd annual meeting of the Spring Manufacturer's Institute held early in December at the New York Hilton Hotel. The organization is composed of 170 representatives

of both manufacturers of springs and companies who are suppliers to the industry. Wheelabrator is the world's largest manufacturer of shot peening equipment which is widely used to increase the fatigue strength of highly stressed metal parts, including springs, gears, connecting rods, etc.

## Local Organizations Hear Wheelabrator Men

**James E. Donlan**, Vice President-Controller, was the featured speaker at the January meeting of the Methods Study Section of the Industrial Council of the South Bend-Mishawaka Area Chamber of Commerce. His topic was "Industrial Plant Expansion and Growth — With an Eye on Burden."

**James L. Hesburgh**, Vice President of International Operations, spoke at the Mishawaka Rotary Club on January 6. His topic was "A Review of International Operations of the Wheelabrator Corporation."

**Robert L. Bump**, Product Manager for Electrostatic Precipitators, presented a program at the Mishawaka Rotary Club

meeting December 16. He spoke on air pollution and the various devices used for the control of pollution.

**Gordon Medlock**, Sales Manager of the Lorco Division, participated in a panel discussion at the December meeting of the St. Joseph Valley Branch of the American Electroplater's Society. He discussed the types of parts that can be handled and the types of finishes that can be achieved with Lorco Wet and Dry-Blast Finishing Equipment.

**John Vaselein**, Welding Engineer, participated in a panel discussion at the December technical session of the Michiana Section of the American Welding Society. He discussed joint preparation and aluminum welding.



## New Employees

Machine Shop, William G. Bowman, Verl M. Wing, Lawrence E. Gurthet, Robert L. Conway, Dewayne W. Moss, Walt J. Lentine, Jr., Richard W. Myers, Ronald W. Albright, Isaac M. Hayden, Herbert Prior, Richard D. Barton, Charles E. Klein, Bart L. Gresham, Maurice W. McFarland, Michael J. Leliaert, Daniel B. Maloney, Jr., Erle E. Heintz, John D. Messer, Hacker D. Combs; Material Handling, James W. Daugherty, Michael V. DelRegno, Francis T. Farrell, David R. Stafford, Sr., Charles Reihl, Jr., Leonard N. Brewer, Leon B. DeMeulenaere, Wilbur L. Dodson, Anthony M. Sergio, Alan K. Soellner, August C. Mahank, Roger S. Smith, Arnold V. Decker, Warren D. Nordman, Paul R. Mutchler, Terry E. Spice, Perry J. Case, Arnold G. Kristowski, Barry E. Flanigan, Richard E. Palicki, Wilson M. Rodgers, Jr.; Foundry, Louis M. Ganus, Wendeline J. Switalski, Donald R. Stephens, Milton Harris, Peter F. Theodosius, Dennis L. Carter, Joseph J. Jenczewski, Jr., Richard J. Urbanski, John W. Balon, Frank A. Zappia, Jr., Robert H. Chambliss, James Dixon, Robert J. Fondell; Fabrication, Terrance L. Magnuson, Sr., William C. VanAntwerp, William D. Heilman, James V.

LaFree, David C. Finch, Marlin Copley, Frederick D. Isza, Donald F. Bare, Daniel E. Cholasinski, Harley E. Watson, George T. Nate, Archie P. Davis, Jr., John C. Fassero, Delbert C. Johnson, Roscoe Joseph, Gerald G. Johnson, Charles E. Roth, Louis C. Ride-nour, Raymond A. McEnderfer, George M. Haines, Lloyd M. Dunning, Edgar Petree, Francis Samuels, William White, Melvin J. Frazier, Augustus S. Alford, Lester F. Althoff, Luther B. Dotson, Gary R. Tingle, Raymond H. DeGeyter, Edward Ride-nour, Stanford L. Bradberry; Brook-ins, Ervin L. Jones, Ernest R. Grze-siak, Dean P. Nordman, Kenneth O. Henry, Ruth M. Brockway, Wanda L. Wolf, O. Virginia Collins, Edward A. Dobrzykowski, Richard D. Schoolman, Agnes M. Darst, Maude E. Bennett, Helen C. Smith, Larry E. Carbaugh, Richard D. Mendenhall, Frank P. Jackson, David L. Fordyce, Boyd Bishop; Assembly, John L. Mourning, Robert L. Lockwood, Clement J. Sniadecki, Richard D. Coddens, Hur-shell Grady, Arthur J. Schauer, Roma L. Davis, Philip L. Snavelly, Thomas J. Lentine, Jr., Leonard M. Bryant, Charles L. Waggoner, John M. Ekamp, Raymond E. VanLake, Samuel G. Gal-loway, Dale J. Douthart, Dale E. Spaid; Plant 2 Production, Everett T. Calbeck, David Fisher, Danny R. Vin-cent, Gerald R. Hogan, Louis G. Car-rico, Ron J. Broussard, Thomas J.

Douthart, Roy Browning; Stockroom, Remo R. Artusi, Jack M. Gemmer, Robert C. Krebs, Sr., Dallas Murphy, Robert R. Klink, Clark Robinson, Jr., Octave E. Delaurelle; Engineering, Michael J. Maggert, William R. Mor-rison, Charles J. Gill, Tina M. Rod-gers, Lawrence J. Nowacki, Csaba Kovacs, James F. Boyer; Sales, Lar-raine A. Nappier, Diane R. Kalil, Gar-rett E. Mullins, Charles S. Smith, Blanche L. Harden, Arthur R. Joye, Ernest T. Kolesiak; Cleveland Office, Maxine R. Lane; Plant 2 Lab, Harold A. Kabay, Alexie F. Forrester, Dennis E. Nitsche, Richard J. Ciesielski; Philadelphia Office, Margaret C. Luckenbach; First Aid, Sadie K. Dag-gy; Purchasing, Sherry L. Smith; Inter-national Operations, Charles S. Al-len, Margaret B. Jackson; Production Manager, Chester J. Herman; Produc-tion Control, David J. Molnar, A. Stoeckinger; Balcrank, Oakley Camp-bell, Chester Barger, Ronald J. Wil-son, Allen W. Wolf, Wilmer C. Rig-don, James A. Rigdon, Robert J. Baker, John M. Teeters; Inspection, George J. Knecht, Wesley J. Bell, Jo-seph G. Troutman, Jr.; Office Services, Anna M. Calentine, Patricia F. Am-ato; Research, Robert M. Jensen; Data Processing, Dorothy M. Trippel; Cost, Velda K. Canell; South Shipping, Lucy A. Brunson; North Shipping, James L. Nettrouer; Marketing, Mi-chael F. Lindsay.

## Anniversaries

### 50 Years

J. D. Alexander.....Sales

### 30 Years

Robert L. Orth.....Vice President  
James M. Powell.....Plant 2  
John J. Williams.....Inspection

### 25 Years

George H. Scott.....Steel Shop

Albert D. Stickel.....Prod'tion Control  
John V. Pawlowski.....Steel Shop  
Robert J. Reihl.....Plant Engineering  
Belle H. Colwell.....Maids  
Chauncey L. Proudfit.....Steel Shop  
Emile A. Devreese.....Demonstration  
Milferd T. Gardner.....Steel Shop  
Richard Huston.....Machine Shop  
Robert L. Newsom.....Machine Shop

### 20 Years

Esther L. Harley.....Engineering  
Walter V. Ostrowski.....Foundry  
John Trojan.....Plant Engineering

Julius E. Skene.....Blast Sales  
Leroy J. Wieschaus.....Regional Mgr.  
Geo. W. Roper.....Dust & Fume Engr.

### 15 Years

Ruth L. Rohleder.....Office  
Albert S. Garrison.....Steel Shop  
H. G. Vanwaeyenbergh.....Mch. Shop  
Amos M. Petcher.....Steel Shop  
Robert L. Branscom.....Plant 2  
Joseph Halasz.....Production Control  
Eugene M. Gibbons.....Machine Shop  
Robert L. Gibbons.....Stockroom  
Carl B. Williams.....Inspection

## Retirements

George H. Lieser.....Sales

Wilbert Mitchell.....Steel Shop

Walter F. Myers.....Production Elec.



Wilbert Mitchell, crane operator in the Steel Shop, was presented a watch by his fellow workers when he retired in January.

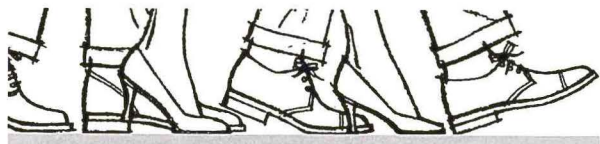
Co-workers gave Walter R. Myers several gifts when he retired in January. He was a production electrician.





## PASSING

# PARADE



That third shift is building up to a pretty good-sized crew and still gaining . . . Crane operator **Wilbert Mitchell** took his retirement at the end of December . . . We have two former World War II tank drivers in the Steel Shop. Foreman **Bill Doty** was a tank driver in the European theatre of war while **Joseph Vogel** drove one for Marshall Erwin Romel of the German army in North Africa. Joe, of course, is now a solid U.S. citizen . . . Cabinet builder **Elmer Mott** entered St. Joseph Hospital January 2 . . . To my fellow employees in the Steel Shop and to all Passing Parade readers, this is my last report of Steel Shop activities since I will be retiring late in February. I have enjoyed reporting and have had a lot of fun doing it. **Fred Beals** is your new reporter. Please give him your full cooperation. The reporters, all of them, do appreciate your help very much.

Milferd T. Gardner, Steel Shop

When the girls in the Sales Room had their Christmas exchange, they were given their gifts by a new type Santa. None of these old, white-haired, fat Santas for us! We had a young, handsome, redhead for our Santa. If you haven't already guessed, the Santa was **Terry Gorsuch**, Customer Service. Hope we haven't embarrassed him too much . . . Wintertime and Florida vacations do go together. **Dick Smith**, Export Department, took his wife and went to the well-known vacationland near the Clearwater-Tampa area. The Busch Gardens at Tampa, as many of you know, is a main attraction there and they enjoyed that immensely. Dick said they are beginning to build a "Disneyland" at Orlando. Planners say it will take about 3 years. Good excuse to go again! . . . **Julie Skene**, Sales, and his wife, Gerry, went on their first 3-week vacation *without kids*. They spent 10 wonderful days in Florida — all sections. Among the sights, they enjoyed Marineland and Cypress Gardens very much. At Miami, being boating enthusiasts, they rented a 15 ft., 50 h.p. outboard and toured the canals and waterways. This trip allowed them to see many of the fabulous homes and shops that you wouldn't see by car. One of the canals was built and named for the picturesque canals of Venice. They stopped, too, at Sarasota

and visited with **Fred Baldauf's** father. On their way back (with a car full of Christmas presents, oranges, clothes, etc.), they visited Williamsburg and other points in the New England States. Luckily, they were blessed with good weather . . . **Art Fuller**, Advertising, and his wife took a nice, long vacation in the southwestern states, also just a short trip to Nogales, Mexico. They visited the NASA Space Center near Houston and also the U.S.S. Texas, a World War II battleship which is maintained by the State of Texas. At the Space Center there is a beautiful auditorium and at 1:00 and 3:00 p.m. they show films of space travel, past, present, and future. There is also an exhibit of "old" space ships . . . Around the world in???? days. That's **A. E. Lenhard**, Advertising, off on a business trip for Wheelabrator. We hope he will find it very pleasureable too. **Panna Patel**, of Advertising also, baked her first cake in the U.S. and tried her hand at decorating it appropriately for the occasion of Mr. Lenhard's departure. Along with "Bon Voyage" and "Happy Landings", she signed it with an Indian good luck sign and the initials of all the Advertising Department personnel . . . Don't all these tales of travel give you the wanderlust? Eleanor Rea, Sales

**Tom Tekker**, former sheet metal man and union steward, moved to Los Angeles in January. We all wish Tom many good fortunes in his new job and home . . . **Hazel Pace**, Template Room attendant, entered the hospital just after Christmas for surgery. For many years Hazel has brightened the Christmas atmosphere in the shop by offering her famous homemade cookies to everyone. During this past Christmas season more than 1,000 cookies were consumed. To show their appreciation for her thoughtfulness and hard work, the men presented Hazel with a double globe lamp . . . On New Year's Day, this reporter received a long distance phone call from Bob George, former shear helper who now resides in Arizona. The call was made to wish everyone at Wheelabrator a prosperous new year . . . **Ed Higginson**, who operates a radial drill, has returned to work after an absence of several weeks due to a hand injury

. . . **Wilbur Boyer**, Steel Shop layout, is recovering at home from an attack of pneumonia . . . **Eddie Lewandowski**, material handler, has put one of his numerous talents to work by drawing cartoons of several of his co-workers. His cousin, **Casey Wegnerouski** and burner **John Bowers** seem to be his favorite subjects.

Fred Beals, Steel Shop

Have you seen the sparkling diamond ring on the third finger of **Phyllis Johnson** of the Production Control Office? Phyllis received the ring from Fred Ragusa of Baldwin, New York for Christmas. No date has been set for the wedding as yet . . . Our deepest sympathy goes to **Bill Yoder**, Plant Electrical Engineer in the recent loss of his father . . . **Vic Miller**, our fabrication man, returned from his two week vacation which he spent in Florida. He came back with a very nice tan . . . **Gene Sobiech**, Methods & Planning, reports that his son is gaining weight every day. He was born on November 23, 1965 . . . **Don Rumples, Jr.** is spending some time in the services of the United States. Don is stationed at Fort Leonard Wood in Missouri.

Hildreth Boehnlein, M&P

The festive holidays are over, the four-day week is over, and now we're back in the full swing of things. Now we await the next festive holidays, the four-day week, etc. . . . Two newcomers to the Dust & Fume Division are welcomed at this time. **Marge Chomyn** has joined us as Stenographer and **Jim Boyer** is at work as Project Engineer. We're glad to have them both with us . . . A belated congratulations is in store for **Alfred Kroll**, who in September became a United States citizen. This was a very proud occasion for Fred, his family and his friends . . . Christmas brought some unusual gifts and also was the occasion of many visits among relatives both here and visits out of town. **Bill Jesernig** and family had as house guests Mrs. Jesernig's family from the East to enjoy the holidays and get a look at the new home . . . **Don Meffert's** family traveled to Torch Lake, Michigan to spend Christmas and take part in a family reunion which was somewhat special in that it was the first time in six years that the whole family had been together . . . Wish we could have seen the faces of the **Bob Neidigh** children on Christmas morning. They must surely have been radiant as they looked out the window to see a live pony waiting to be discovered. That's some Santa Claus! . . . **Ronnie Seider**, son of **Lucy** and Jack, has become a student minister at a Bentonville, Indiana church. The Seider family had the privilege of seeing and hear-



ing him at services over the holidays . . . Color T.V. has caught on at the **VanHoutdrevre** household. **Nancy** relates it is a beautiful change from the familiar black and white. The color set was a Christmas gift from members of the family. **Karen**, who is a former employee in **Dust & Fume**, had to wait until semester break at college before she could enjoy it again.

Mary Jo Acrey, **Dust & Fume Control**

**Eric Hanson** has been very busy since leaving the Accounting Department on December 17th. He and his wife went to Wisconsin to visit Mrs. Hanson's grandmother who is 102 years of age. And if you think it's cold here in Mishawaka, the temperature in Wisconsin during their visit was 10° below zero. The weather there was too much for them so they are warming up in Florida before returning to their home in Denmark this month . . . Many new faces around the old place! Just a few of the new people are **Marilyn Causey** and **Frank Romanker**, Accounting; **Peggy Jackson** and **Chuck Allen**, International Operations; **Joe Janush**, **Mike Lindsay** and "**Duke**" **Mallory**, Marketing . . . **Mr. and Mrs. Hesburgh** are the parents of a new daughter, **Monique Michelle**. **Monique** arrived on December 15 — just in time to hang her stocking for Santa's visit. Congratulations . . . The past holiday season brought out the creative ingenuity of the members of the Accounting Department. The girls took **Shorty's** white coffee cups, cut them into different shapes, added trim and turned out old fashioned trimmings for their Christmas tree . . . For the past two months, each week, the 4 J's Plus 1 have received an unsigned card wishing them good luck when they bowl on Tuesday evenings. **Jo Wiendels**, **Joan Schue**, **Jean Vergon**, **Jane Clements** and **Mary Helen Driver** are the girls on the team and since receiving these cards have remained in first place by at least nine points. We thank our anonymous rooster, and please don't stop.

Jane Clements, Financial

### CANADIAN CLASSICS

Once again this past Christmas, the staff and management of the whole Scarborough division got together for a Christmas luncheon. **Gordon Dick** brought in his large rotisserie and **Betty Dick** supplied us with some of her special sauce for the roast beef. The meat was done to perfection and the girls in the office arranged a very attractive buffet — we all had a very pleasant time . . . The management also presented each of us with a ham and turkey which was very much ap-

preciated . . . **Bill Wilkinson** had a nice trip to Vancouver, B.C. to set up the accounting system and look over the situation at the **Edward Lipsett Co.** our latest acquisition. **Bill** came back enthused about the beautiful weather he enjoyed on his trip and how beautiful the scenery was . . . **Doug Lamb** had a large delegation from **DOSCO Steel** come up to find out just what our new double blast equipment would do. **Doug** held his "pep talk" in our Board Room and gave them a few good sales points and the **Dosco** people went back home well satisfied that they had come. We also wish to congratulate **Doug Lamb** on his recent appointment to the position of Assistant General Manager of **Wheelabrator Corporation of Canada Ltd.** . . . **Alex Horne**, Manager of Blast Sales, is busy, busy, busy. It seems he is either just stopping at the office long enough to pick up a proposal to deliver to the customer or is busy writing up the Detail of Order on one he has just sold . . . **Ernie McLaughlin** and **Clayton Dinger**, our two golf experts, usually get together after the weekend and talk over the plays on the **Wide World of Golf** and wish the snow would go so they could get out playing golf again . . . **John MacKay**, **Dust & Fume**, really looks forward to the winter, especially now that he has his new **Alu skis**. He and wife **Brenda** take off for the slopes every weekend . . . Our lunchroom really gets a lot of use, particularly now that the bad weather has set in. Besides our morning and afternoon coffee breaks we usually have a very exciting game of "Crazy 8's" . . . Of late our Accounting staff, **John Foster**, **Gordon Big Canoe** and **Bill Wilkinson** have been burning the midnight oil getting the

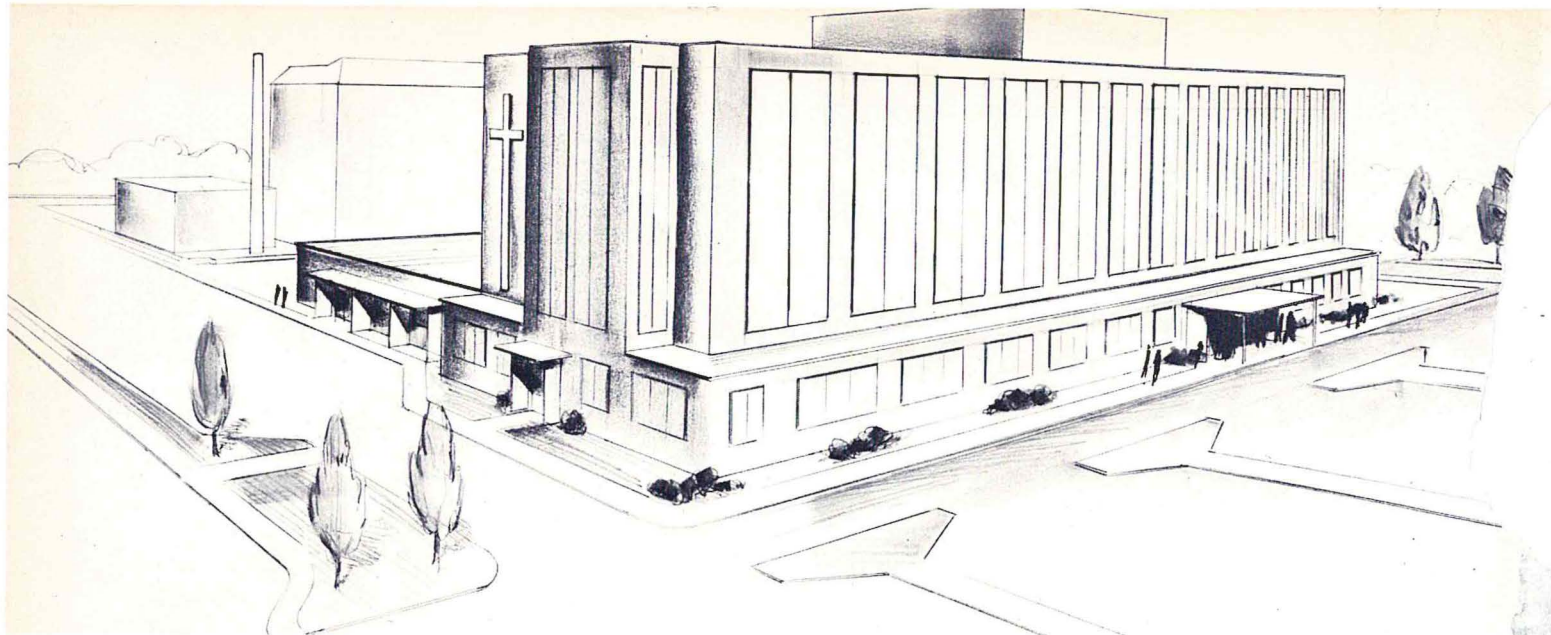
month-end and year-end statements, etc., finished up. They have been cooking a few meals of late on the small stove in the lunchroom and are becoming quite expert short order cooks . . . **Jimmy Wilkinson**, Parts Manager, became a proud father before Christmas and he and wife **Else** have another bouncing baby boy . . . **Gordon** and **Anne Big Canoe's** young son **Kevin** recently was in the hospital with a virus infection but we are all happy to see that he is back home again . . . **Ed Stoltz**, Blast Sales & Service Engineer, just got his new 1966 **Pontiac**. What is that color again, **Ed**? Deep purple, or mulberry? . . . **Herb O'Connor**, Production, has a new girl to help him with some of the paper work. **Miss Linda Donaldson** is the name of this young lady and she is the girl "Friday" of the Production Dept. . . . **Jackie Hawkyard**, Secretary Blast Division, doesn't know whether she should sell her car, trade it in, or just walk to work. She has been having lots of trouble with her present auto, which doesn't seem to like the bad weather. Never mind **Jackie**, they say walking is good for the health . . . **Eric Robinson** and **Herb Temple**, our warehouse staff, do not know if they are winning or losing. Every time they get a bunch of orders out in comes another **Pool Truck**. Keep at it fellows, you might win someday . . . **Doug Durrell**, **Dust & Fume Sales & Service**, is at it again. I think this is the third race car in as many years, isn't it **Doug**? I have lost track. Lots of luck this time, anyway . . . We wish to extend to everyone at **Mishawaka** all the best for the New Year and to thank them for the assistance they have given us during the past year.

Bob Ross



Julianna Club members presented Marie DeVore with this bracelet before she left her job at **Wheelabrator** in December. Marie worked in Files.





An artist's sketch of the proposed new wing for St. Joseph Hospital.

## *St. Joseph Hospital Expansion — a vital need for the community*

Industries and the families of persons they employ rely heavily upon the hospital facilities in their community. Wheelabrator Corporation is no exception.

Over the past year, an average of 125 Wheelabrator employees or members of their families entered an area hospital each month. Multiply this figure by 12 and the yield is 1500 patients served a year. Then multiply this total by the number of other good-sized industries in Mishawaka and you'll readily see that people who work in industry alone create a substantial strain on hospital facilities.

A number of hospitals service this area. However, the prime agency for fulfilling the medical needs of our families is Mishawaka's own St. Joseph Hospital, which announced in December a \$3,000,000 expansion and modernization program.

In recent years, the hospital has been operating under increasingly cramped conditions in all of its service areas. In order to remedy this, the hospital is planning a five-story addition which will allow the facility to maintain a high level of medical care and to continue to attract and retain in Mishawaka the best possible medical staff.

Of the \$3 million needed to complete the expansion program, \$1 million has already been raised by the Ancilla Domini Sisters who are administrators of the hospital. The balance will be raised by public subscription.

The new wing, which will increase from 101 to 165 the number of beds available for patient care, will provide new facilities for the following services: administrative and business offices, delivery rooms, dietary facilities, elevators, emergency rooms, laboratories, labor rooms, outpatient facilities, pharmacy, record room, surgeries, x-ray department as well as medical, surgical, obstetrical and pediatric beds.

Since the expansion of the local hospital is of vital importance to the community, Wheelabrator Corporation has made a sizeable contribution to the Fund Drive. It is hoped that our employees, too, will respond wholeheartedly to this most worthy cause.

Location of the new wing  
in relation to  
the existing Hospital.

